

## Forsmark International Forum, FIF

The **Forsmark International Forum** provides a unique opportunity to follow, learn from and interact with **SKB** during the construction of operational repositories.

FIF is designed as a long-term learning and dialogue platform for organisations responsible for, or supervising, radioactive waste management programmes. It enables participants not only to follow progress, but to **learn from real-world implementation, discuss challenges with experienced practitioners, and apply insights directly within their own national contexts.**

By combining continuous digital access, expert interaction, live webinars, on-site visits and structured strategic dialogue, FIF provides comprehensive and **practical insight, decision-relevant experience and organisational learning** into repository implementation in practice.

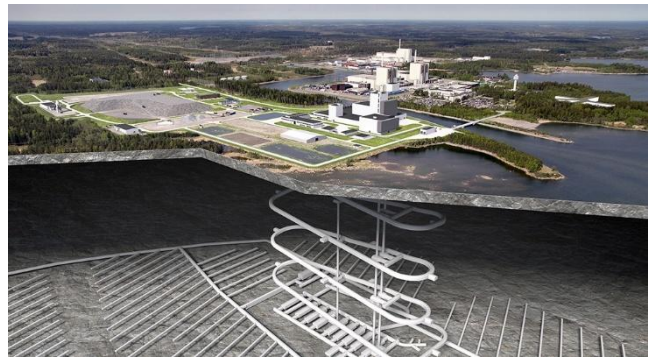


## A Unique Repository Implementation Portfolio

SKB is currently implementing two major repository projects at Forsmark:

### Spent Fuel Repository

- Project duration:  
approximately 10 years
- Total budget:  
approximately €1.6 billion
- Scope includes construction,  
surface and underground  
infrastructure, systems  
development and operational  
readiness



### SFR Extension

#### (Final Repository for Short-Lived Radioactive Waste)

- Project duration:  
approximately 6 years
- Total budget:  
approximately €350 million
- Focus on expansion of the existing  
repository, integration with ongoing  
operations, and phased  
construction



**These projects constitute one of the most comprehensive and advanced repository implementation portfolios in the world, offering rare insight into both strategic and operational realities**



## What FIF Covers – From Strategy to Construction Reality

FIF addresses the full spectrum of challenges involved in repository implementation, including:

### **Programme and Project Management**

Organisation, roles and interfaces

Knowledge management and competence development

Progress, milestones and long-term planning

Risk management and occupational safety

### **Construction and Engineering: Systems and Materials**

Construction of surface and underground infrastructure

Tunnel, shaft and cavern excavation methods

Buffer, backfill and canister development

Borehole sealing

Machinery, automation and logistics

Operational planning and repository logistics

### **Site Investigations**

Investigations conducted during construction

Data acquisition, handling and management

Monitoring and site descriptive modelling

Use of digital tools and Artificial Intelligence (AI) applications

### **Regulatory, Procurement and Stakeholder Considerations**

Licensing processes and regulatory conditions

Procurement strategies and client–supplier partnerships

Quality assurance and control processes

Stakeholder engagement and public communication



## How Information is Delivered

FIF combines digital continuity with direct expert interaction:

- **Web-based knowledge portal** (core delivery channel)
- **Recorded Presentations and live webinars**
- **Annual on-site visit to Forsmark**

### Web-based knowledge portal

Information within FIF is primarily shared through a dedicated web-based portal, providing continuous and structured access to content. Participating organisations receive access through **personal user accounts**, enabling secure, individualised access for authorised users within each organisation.

Portal access includes:

- Regular progress updates (approximately monthly)
- Overviews of the Forsmark site, facilities and construction plans
- Recorded presentations covering construction activities and R&D topics
- A Q&A forum allowing participants to submit written questions and receive responses from SKB experts

All material is intended to support **internal use** within participating organisations.



## Live webinars

Two live webinars per year  
(approximately two hours each)

**Purpose:**

Enable oral questions and dialogue with  
SKB experts

**Focus on:**

- Key topics presented since the previous period
- Clarification of technical, organisational and strategic issues

## Recorded presentations

- Uploaded on a regular basis  
Typical duration: 30–60 minutes
- One or more new presentations per quarter, cover both:

- Forsmark construction activities
- Research and technical development topics

## Annual on-site visit to Forsmark

An annual site visit to Forsmark is organised for FIF participants.

### Format

- 1–1.5 day visit
- On-site observation of ongoing construction activities
- Presentations and in-depth discussions with SKB representatives
- Strategic Member Meeting (Tier 2)

### Included

- Guided site observations
- Presentations and Q&A sessions
- Two lunches and one dinner

The site visit provides first-hand insight into construction reality and complements the digital content through direct professional exchange.





## Participant Profile

FIF is offered to organisations involved in national radioactive waste management programmes, including:

- Implementers and waste management organizations
- Research organisations and technical institutions
- Authorities and regulatory bodies

Participation is **organizational rather than individual**, allowing the dissemination of information and insights internally within member organisations. FIF is designed as a long-term learning platform – supporting input for risk reduction, improved planning and design decisions, organizational development and licensing & regulatory dialogue.



## Membership

There are two different memberships in FIF: Core member and Strategic member.

### Tier 1 – Core Member

Core Member access includes:

- Access to all core content within the digital FIF portal
- Written Q&A with SKB experts via the portal
- Portal access via personal user accounts for up to three users per organisation
- Opportunity to participate in the annual Forsmark site visit (subject to availability and separate arrangements)

### Tier 2 – Strategic Member

Strategic Membership is intended for organisations seeking **deeper engagement, dialogue and influence**. In addition to full access to all FIF content, Strategic Members gain:

- **Direct dialogue with SKB experts** through interactive live webinars (2 per year)
- **First-hand insight** through annual on-site visits to Forsmark, including observation of ongoing construction and in-depth technical discussions:
  - Up to eight participants per organisation
  - Local transportation, lunches and one joint dinner included
  - Travel and accommodation not included
- **Structured strategic dialogue** through participation in the annual Strategic Member Meeting, creating a forum to:
  - Propose and explore priority topics and themes
  - Review progress and implementation experience
  - Provide feedback and help shape the future development of FIF
- Extended organisational access, enabling broader internal learning and alignment
  - Portal access via personal user accounts for up to eight users per organisation

Strategic Membership is designed to support better-informed decisions, reduced implementation risk and stronger organisational readiness by learning directly from an active repository programme.



## Overview of FIF Membership Categories

Aspect	Tier 1 – Core Member	Tier 2 – Strategic Member
<b>Access to digital content</b>	X	X
<b>Portal access method</b>	Personal user accounts	Personal user accounts
<b>Number of portal users</b>	Up to 3 per organisation	Up to 8 per organisation
<b>Written Q&amp;A via portal</b>	X	X
<b>Live interactive webinars</b>	–	X
<b>Annual on-site visit</b>	Optional	X
<b>Participants in site visit</b>	As agreed	Up to 8 per organisation
<b>Included services during site visit</b>	–	Local transport, lunches and one dinner
<b>Travel and accommodation</b>	–	–
<b>Committee / Strategic Member Meeting</b>	–	X Annual Strategic Member Meeting
<b>Level of engagement</b>	Core access and information sharing	Active strategic dialogue and continuous improvement of FIF



## Administration team



Erik Thurner



Ebbe Eriksson



Julia Holmgren

For further information about the Forsmark International Forum please contact [skb.int@skb.se](mailto:skb.int@skb.se)

Visit our website: [skbinternational.se](http://skbinternational.se)